

ORDER NUMBER
Co. Code/Seq. No./Yr. of Entry 26 012 2002

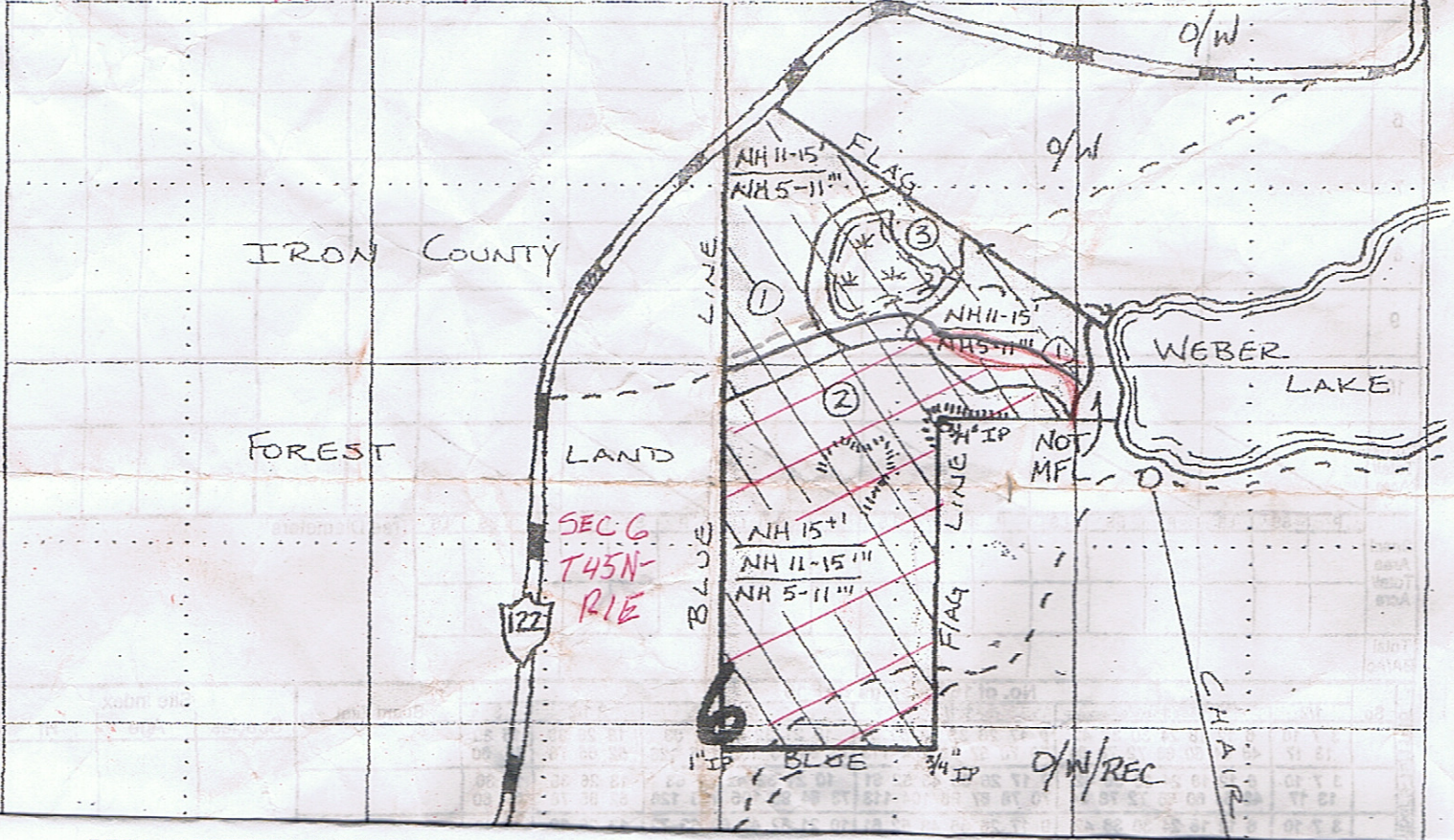
MANAGED FOREST LAW MAP
Form 2450-133 Rev. 12-97

MADISON OFFICE USE ONLY
Acres Entered 40.01

Owner's Name Bellamy, Louis & Colleen	Town or Village Name ANDERSON	County IRON
Street or Route 200 LEAF ST.	Township No. 45N	Range 1
City, State, Zip Code LONG LAKE MN 55356	Closed Acres 40.01	Open Acres 0

LEGEND: Closed Area Section Diagram
8" = 1 Mile
SALE AREA Open Area
STAND 2 FIRE # 11780N HWY 122

Prepared By _____
Date _____



BELLAMY HWY 122 SALE, 26 acres, 200 cords total, 5 MBF

ESTIMATED VOLUMES	MINIMUM ACCEPTABLE BID	BID PRICE	EST. TOTAL
Mixed Hardwood =160 cords	\$22 per cord		
Basswood =40 cords	\$10 per cord		
Hard Maple =1 MBF	\$300 per MBF		
Basswood =3 MBF	\$125 per MBF		
Mixed sawlogs(BY, ASH) = 1 MBF	\$205 per MBF		

CUTTING REQUIRMENTS

Cut all trees marked with orange paint, including those trees marked less than 4" diameter in canopy gaps. Good access with established trails. No cutting or skidding in May or June "Sawlogs" have the following minimum specifications and include #3 logs: Minimum diameter small end, hardwoods 10.6 inches, length 8 feet; maximum scale deduction 50%. Utilize all pulpwood to a minimum 4-inch top diameter and all sawtimber to a 10-inch min top diameter. Boundaries are marked by blue paint and pink ribbon, no cutting or felling across cutting lines. All survey corners must be protected from logging damage. Good network of roads and trails and additional logging roads subject to advance approval by Forester and WI BMP's for water quality followed. Sale has steep to rolling terrain and good access off Hwy 122. All payments will be based on Mill scale.

Bids must be a received on or before January 5, 2017 with a 10% bid deposit. A 20% performance bond guarantee will be required at the time the contract is signed. Send to:
Fitzgerald Forestry, 8240 N Northend Rd, Mercer, WI 54547. (715-776-0808) or email to: tim@fitzgeraldforestry.com