
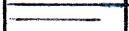


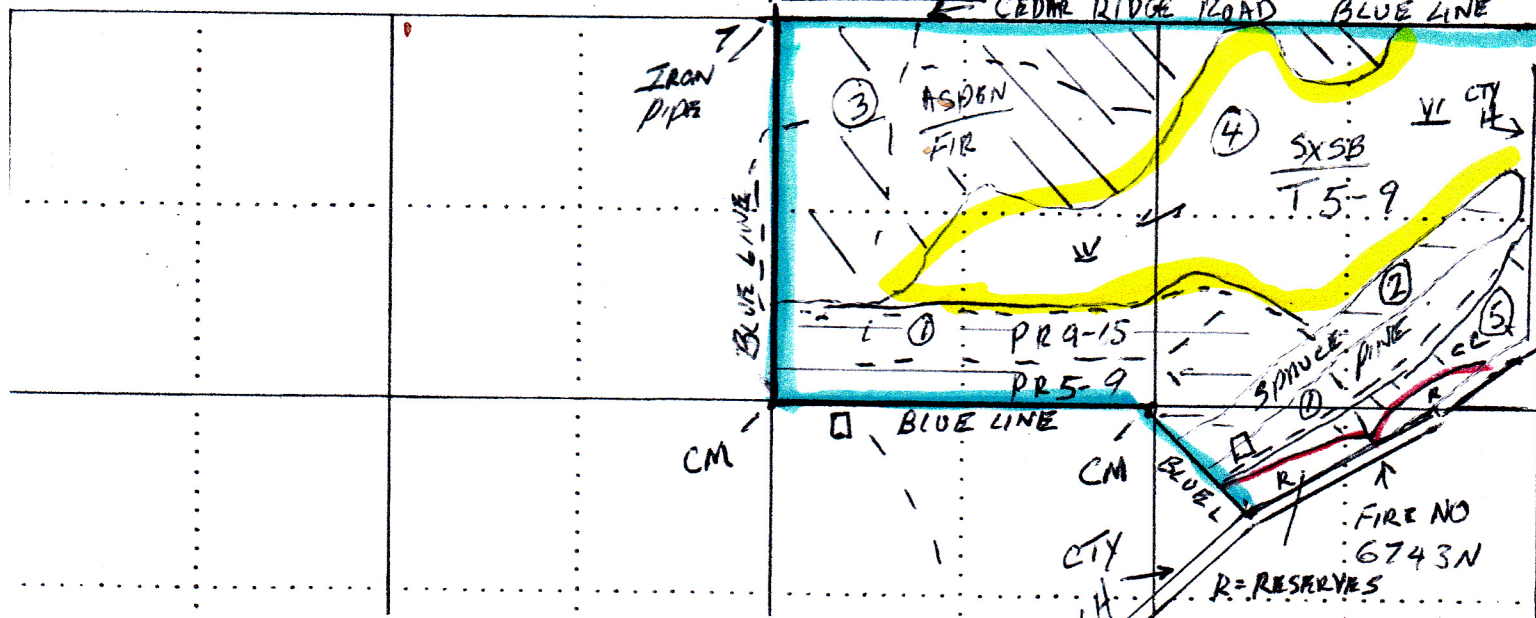
NICOL CTY H SALE

TOTAL 405 CORDS

LEGEND: CLEAR CUT Area  Section Diagram
MARKED Area  8" = 1 Mile

Prepared By TIM FITZGERLD

Date 1-20-15 ICF



NICOL HWY H Sale, 40 acres, Pine thinning and Aspen/Fir CC
(6743 N Hwy H—sec 7 T43N-R4E, Town of Mercer, Iron Co.

ESTIMATED VOLUMES		MINIMUM BID	BID PRICE	EST. TOTAL
Mixed Hardwood	= 30 cords	\$24 per cord		
Aspen	=80 cds	\$22 per cord		
Balsam Fir	=70 cds	\$15 per cord		
Spruce	= 95 cds	\$20 per cord co-mingled		
Red Pine	= 110 cds	\$50 per cord co-mingled		
Tamarack	=20 cords	\$20 per cord		
Mixed HDWD saw	=1 MBF	\$100 per MBF		

CUTTING REQUIRMENTS

Stand 1 Pine; Cut all trees marked with orange paint Also cut all aspen, and balsam fir with 1 or more 100" pulp sticks.
Stand 2 Spruce; cut all trees marked with orange paint. Stand 3 Aspen/fir; clear cut at least 50% of stand, leaving reserves of smaller trees in patches of 2-5 acres for wildlife and leave all pines. Stand 4 Tamarack/spruce; cut trees on fringes of this bog. Stand 5 Jack pine/fir; cut all trees except red and white pine. Conifers sawlogs sold co-mingled with pulpwood.
Hardwood "Sawlogs" have the following minimum specifications and include #3 logs: Minimum diameter small end, hardwoods 10.6 inches, length 8 feet; maximum scale deduction 50%. Utilize all pulpwood to a minimum 4-inch top diameter and all sawtimber to a 10-inch min top diameter. Boundaries are marked by pink ribbon and blue paint no cutting or felling across cutting lines. All survey corners must be protected from logging damage. Good access off of Hwy H and additional logging roads subject to advance approval by Forester and WI BMP's for water quality followed. Flat to rolling terrain with good operability, spring break up or summer chance sale, only have to cut into bog as far as processor can reach.

All payments will be based on Mill scale.

Bids must be received on or before Feb 24, 2015 with a 10% bid deposit. A 20% performance bond guarantee will be required at the time the contract is signed. Send to: Fitzgerald Forestry, 8240 N Northend Rd, Mercer, WI 54547. (715-776-0808)